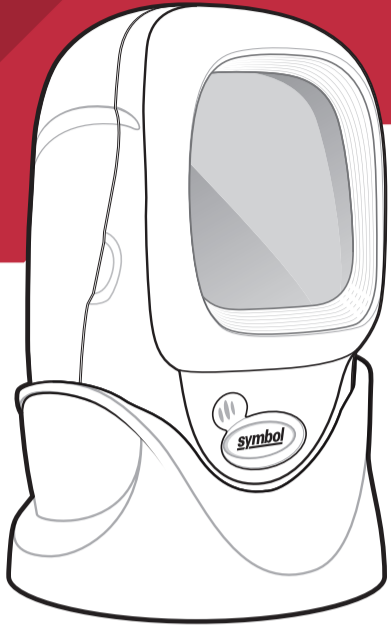


# LS9203 Quick Start Guide

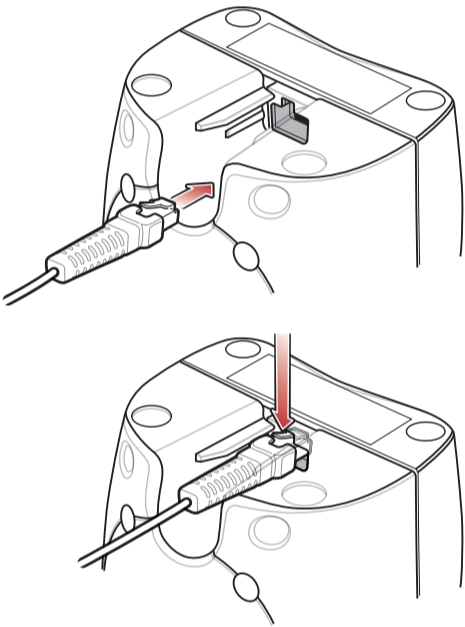
<http://www.symbol.com/LS9203>

NOTE: Cables may vary depending on configuration.



See Product Reference Guide for more information

## Step 1 - Cord Attachment/Removal



## Miscellaneous Settings

### Set Defaults



SET DEFAULTS

### Carriage Return/Line Feed



SCAN OPTIONS



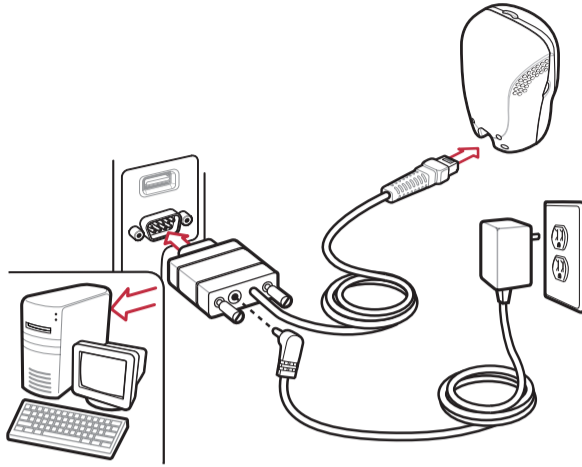
<DATA><SUFFIX>



ENTER

## Step 2 - Connect to Host

### RS-232



### Step 3 - Scan **ONE** of the following



STANDARD RS-232



ICL RS-232



NIXDORF RS-232 MODE A



NIXDORF RS-232 MODE B

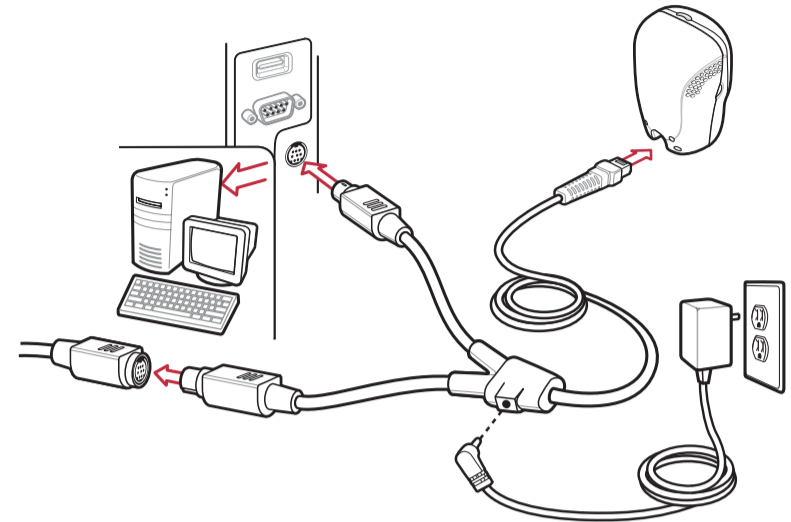


FUJITSU RS-232



OPOS/JPOS

### Keyboard Wedge



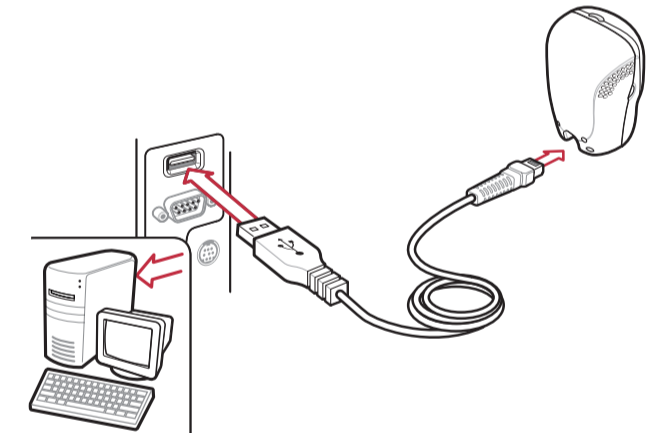
Note: Power Supply Optional

### Step 3 - Scan the following



IBM PC/AT and IBM PC COMPATIBLE

### USB



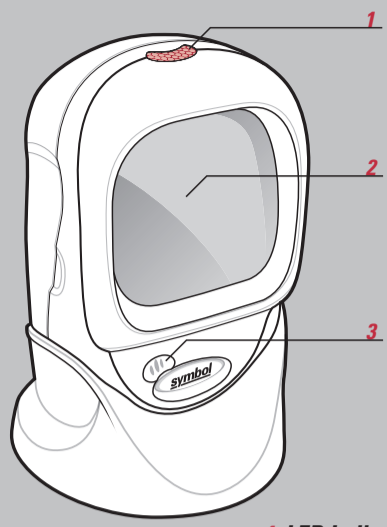
### Step 3- Scan **ONE** of the following



HID KEYBOARD EMULATION

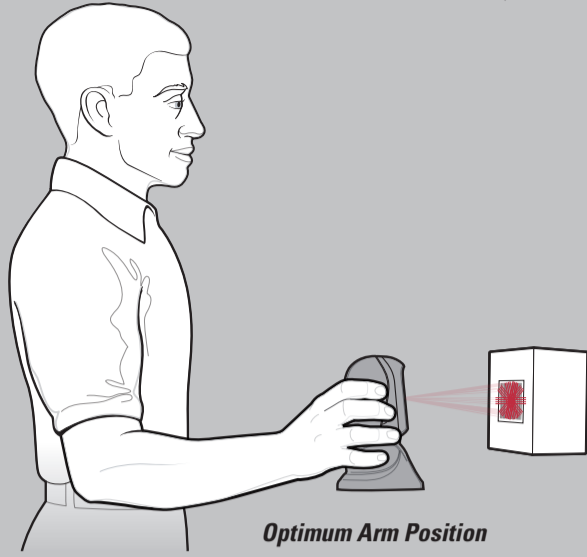


IBM HAND-HELD USB



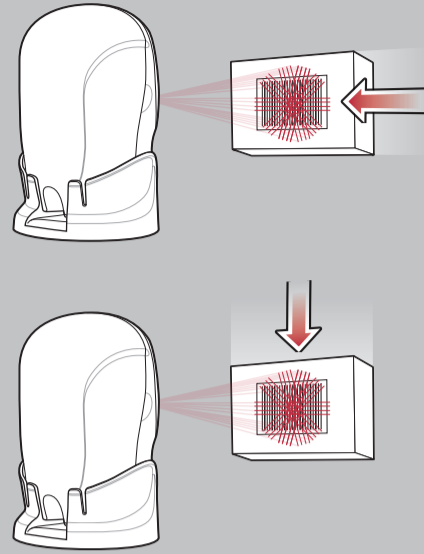
1 LED Indicator  
2 Scan Window  
3 Beep

**Hand-Held Scanning**

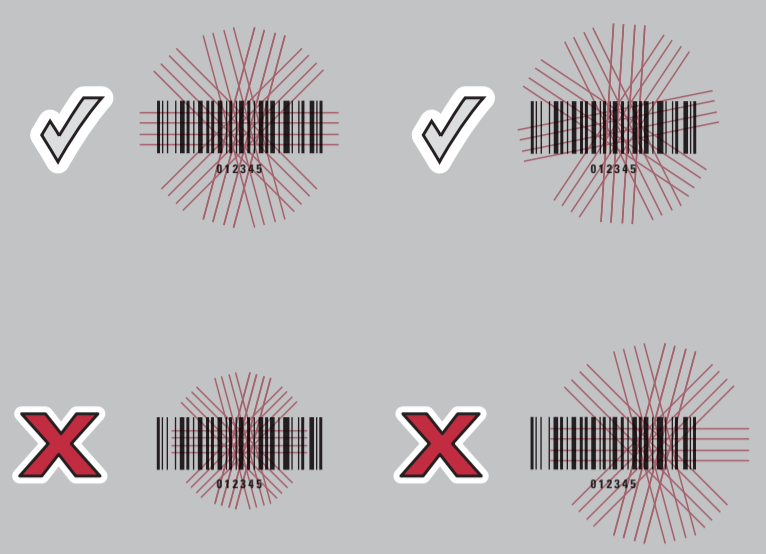


Optimum Arm Position

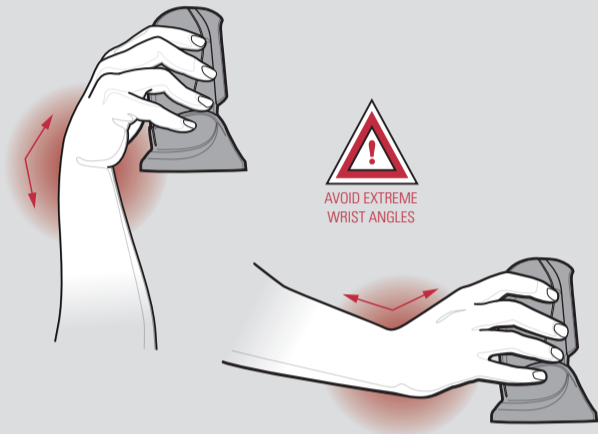
**Hands-Free Scanning**



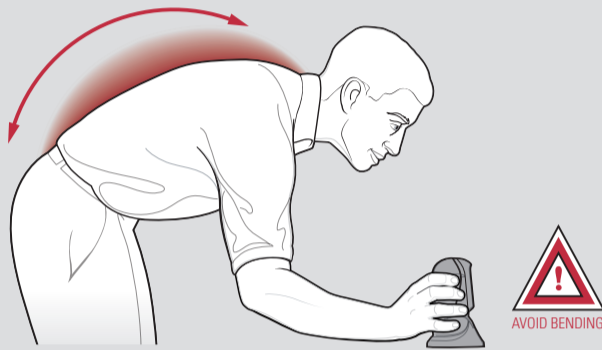
**Aiming**



**Avoid Extreme Wrist Angles**



**Avoid Bending**



**Avoid Reaching**



**Ergonomic Recommendations**  
**Caution:** In order to avoid or minimize the potential risk of ergonomic injury follow the recommendations below. Consult with your local Health & Safety Manager to ensure that you are adhering to your company's safety programs to prevent employee injury.

- Reduce or eliminate repetitive motion
- Maintain a natural position
- Reduce or eliminate excessive force
- Keep objects that are used frequently within easy reach
- Perform tasks at correct heights
- Reduce or eliminate vibration
- Reduce or eliminate direct pressure
- Provide adjustable workstations
- Provide adequate clearance
- Provide a suitable working environment
- Improve work procedures.

**LED Indications**

Off	Green	Red
Scanner is on and ready to scan, or no power to scanner	Bar code is successfully decoded	Transmission error

**Beeper Indications**

Standard Use	Low/medium/high beep	Short medium beep	4 long low beeps
Power up	Bar code decoded	Transmission error detected, data is ignored	
Parameter Menu Scanning	High/low/high/low beep	High/low beep	Low/High beep
Successful parameter setting	Correct programming sequence performed	Incorrect programming sequence or 'Cancel' bar code scanned	

**Regulatory Information**

©2005 SYMBOL TECHNOLOGIES, INC. All rights reserved. Symbol reserves the right to make changes to any product to improve reliability, function, or design. Symbol does not assume any product liability arising out of, or in connection with, the application or use of any product, circuit, or application described herein. No license is granted, either expressly or by implication, estoppel, or otherwise under any patent right or patent, covering or relating to any combination, system, apparatus, machine, material, method, or process in which Symbol products might be used. An implied license exists only for equipment, circuits, and subsystems contained in Symbol products. Symbol and the Symbol logo are registered trademarks of Symbol Technologies, Inc. Other product names mentioned in this manual may be trademarks or registered trademarks of their respective companies and are hereby acknowledged. Symbol Technologies, Inc., One Symbol Plaza, Holtsville, N.Y. 11742-1300, <http://www.symbol.com>

**Patents**  
This product is covered by one or more of the patents listed on the website: [www.symbol.com/patents](http://www.symbol.com/patents).

**Service Information**  
Before you use the unit, it must be configured to operate in your facility's network and run your applications. If you have a problem running your unit or using your equipment, contact your facility's Technical or Systems Support. If there is a problem with the equipment, they will contact the Symbol Support Center:

United States	1-800-653-5350 or 1-631-738-2400
Canada	905-629-7226
United Kingdom	0800 328 2424
Asia/Pacific	+65-6796-9600
Australia	1-800-672-906
Austria/Österreich	1-505-5794-0
Denmark/Danmark	7020-1718
Finland/Suomi	9 5407 580
France	01-40-96-52-21
Germany/Deutschland	6074-49020
Italy/Italia	2-484441
Mexico/México	5-520-1835
Netherlands/Nederland	315-271700
Norway/Norge	+47 2232 4375
South Africa	11-8095311
Spain/España	91 324 40 00 (Inside Spain) +34 91 324 40 00 (Outside Spain)
Sweden/Sverige	84452900
Latin America Sales Support	1-800-347-0178 (Inside US) +1-954-255-2610 (Outside US)
Europe/Mid-East Distributor Operations	
Contact local distributor or call	+44 118 945 7360

For the latest version of this guide go to: <http://www.symbol.com/manuals>.

**Troubleshooting**

Scanner not working	Scanner decoding bar code, but data not transmitting to host
<p>No power to scanner</p> <p>Check system power; ensure power supply, if required, is connected</p>	<p>Scanner not programmed for correct host interface</p> <p>Scan appropriate host parameter bar codes</p>
<p>Incorrect interface cable used</p> <p>Ensure that correct interface cable is used</p>	<p>Interface cable is loose</p> <p>Ensure all cable connections are secure</p>
<p>Interface/power cables are loose</p> <p>Ensure all cable connections are secure</p>	

**Scanned data incorrectly displayed on host**

Scanner not programmed for correct host interface  
Scan appropriate host parameter bar codes

**Scanner not decoding bar code**

Scanner not decoding bar code	Distance between scanner and bar code incorrect
<p>Scanner not programmed for bar code type</p> <p>Ensure scanner is programmed to read type of bar code being scanned</p>	<p>Bar code unreadable</p> <p>Ensure bar code not defaced; try scanning test bar code of same bar code type</p>

**Laser Labels**

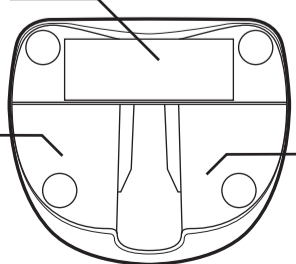
In accordance with Clause 5, IEC 825 and EN60825, the following information is provided to the user:

<b>ENGLISH</b> CLASS 1 CLASS 2	CLASS 1 LASER PRODUCT LASER LIGHT DO NOT STARE INTO BEAM CLASS 2 LASER PRODUCT
<b>DANISH / DANSK</b> KLASSE 1 KLASSE 2	KLASSE 1 LASERPRODUKT LASERLYF SE IKKE IND I STRÅLEN KLASSE 2 LASERPRODUKT
<b>DUTCH / NEDERLANDS</b> KLASSE 1 KLASSE 2	KLASSE-1 LASERPRODUKT LASERLICHT NIET IN STRAAL STAREN KLASSE-2 LASERPRODUKT
<b>FINNISH / SUOMI</b> LUOKKA 1 LUOKKA 2	LUOKKA 1 LASERTUOTE LASERVALO ÄLÄ TUIJOTA SÄDETTÄ LUOKKA 2 LASERTUOTE
<b>FRENCH / FRANÇAIS</b> CLASSE 1 CLASSE 2	PRODUIT LASER DE CLASSE 1 LUMIÈRE LASER NE PAS REGARDER LE RAYON FIXEMENT PRODUIT LASER DE LA CLASSE 2
<b>GERMAN / DEUTSCH</b> KLASSE 1 KLASSE 2	LASERPRODUKT DER KLASSE 1 LASERSTRAHLEN NICHT DIREKT IN DEN LASERSTRAHL SCHAUEN LASERPRODUKT DER KLASSE 2
<b>JAPANESE / 日本語</b> 第1種 第2種	第1種レーザー製品 レーザー光線 光線を見つめないでください 2種レーザー製品
<b>HEBREW</b>	מוצר לייזר רמה 1 רמה 2 אור לייזר אין להביט אל תוך הזרם מוצר לייזר רמה 2
<b>ITALIAN / ITALIANO</b> CLASSE 1 CLASSE 2	PRODOTTO AL LASER DI CLASSE 1 LUCE LASER NON FISSARE IL RAGGIO/PRODOTTO AL LASER DI CLASSE 2
<b>NORWEGIAN / NORSK</b> KLASSE 1 KLASSE 2	LASERPRODUKT, KLASSE 1 LASERLYS IKKE STIRR INN ILYSSTRÅLEN LASERPRODUKT, KLASSE 2
<b>PORTUGUESE / PORTUGUÊS</b> CLASSE 1 CLASSE 2	PRODUTO LASER DA CLASSE 1 LUZ DE LASER NÃO FIXAR O RAIÃO LUMINOSO PRODUTO LASER DA CLASSE 2
<b>SPANISH / ESPAÑOL</b> CLASE 1 CLASE 2	PRODUCTO LASER DE LA CLASE 1 LUZ LASER NO MIRE FIJAMENTE EL HAZ PRODUCTO LASER DE LA CLASE 2
<b>SWEDISH / SVENSKA</b> KLASS 1 KLASS 2	LASERPRODUKT KLASS 1 LASERLJUS STIRRA INTE MOT STRÅLEN LASERPRODUKT KLASS 2
<b>CHINESE / 简体中文</b> 1类 2类	1类激光产品 激光切勿直视光束 2类激光产品
<b>KOREAN / 한국어</b> 1등급 2등급	1등급 레이저 제품 레이저 광선 이 광선을 주시하지 마십시오. 2등급 레이저 광선

COMPLIES WITH 21CFR1040.10, IEC 825-1:1993/EN60825-1:1994+A11:1996  
THIS CLASS B DIGITAL APPARATUS COMPLIES WITH CANADA ICES-003.  
CET APPAREIL NUMÉRIQUE DE LA CLASSE B EST CONFORME À LA  
NORME NMB-003 DU CANADA.

CLASS 1 LASER PRODUCT  
LASER KLASSE 1  
APPAREIL À LASER DE CLASSE 1

CLASS 1/2 LASER PRODUCT  
AVOID LONG-TERM VIEWING  
OF DIRECT LASER LIGHT  
INPUT 5.2V 650mA  
SERIAL ACCESSORY  
I.T.E.



NO USER SERVICEABLE PARTS  
OPENING VOIDS WARRANTY  
CAUTION: LASER LIGHT WHEN  
OPEN. DO NOT STARE INTO BEAM.  
ATTENTION - LUMIÈRE LASER EN  
CAS D'OUVERTURE. NE PAS  
REGARDER DANS LE FAISCEAU.  
VORSICHT: LASERLICHT, WENN  
ABDECKUNG GEÖFFNET. NICHT  
IN DEN STRAHL  
BLICKEN.



**Regulatory Information**

All Symbol devices are designed to be compliant with rules and regulations in locations they are sold and will be labeled as required. Any changes or modifications to Symbol Technologies equipment, not expressly approved by Symbol Technologies, could void the user's authority to operate the equipment. Antennas, use only the supplied or an approved replacement antenna. Unauthorized antennas, modifications, or attachments could cause damage and may violate regulations.

**Laser Devices**

Symbol products using lasers complies with 21CFR1040.10 and 1040.11, EN60825-1:1994+A1:2002+A2:2001 and IEC60825-1:1993+A1:1997+A2:2001 The laser classification is marked on one of the labels on the product. Class 1 Laser devices are not considered to be hazardous when used for their intended purpose. The following statement is required to comply with US and international regulations:

**Caution: Use of controls, adjustments or performance of procedures other than those specified herein may result in hazardous laser light exposure.**

Class 2 laser scanners use a low power, visible light diode. As with any very bright light source, such as the sun, the user should avoid staring directly into the light beam. Momentary exposure to a Class 2 laser is not known to be harmful.

**Radio Frequency Interference Requirements**



Tested to comply with FCC Standards FOR HOME OR OFFICE USE

**Note:** This equipment has been tested and found to comply with the limits for a Class B digital device, pursuant to Part 15 of the FCC rules. These limits are designed to provide reasonable protection against harmful interference in residential installation. This equipment generates, uses and can radiate radio frequency energy and, if not installed and used in accordance with the instruction manual, may cause harmful interference to radio communications. However there is no guarantee that interference will not occur in a particular installation. If this equipment does cause harmful interference to radio or television reception, which can be determined by turning the equipment off and on, the user is encouraged to try to correct the interference by one or more of the following measures:

- Reorient or relocate the receiving antenna
- Increase the separation between the equipment and receiver
- Connect the equipment into an outlet on a circuit different from that to which the receiver is connected
- Consult the dealer or an experienced radio/TV technician for help.

**Radio Frequency Interference Requirements - Canada**

This Class B digital apparatus complies with Canadian ICES-003. Cet appareil numérique de la classe B est conforme à la norme NMB-003 du Canada.

**Marking and European Economic Area (EEA)**



**Statement of Compliance**  
Symbol Technologies, Inc., hereby declares that this device is in compliance with all the applicable Directives, 89/336/EEC, 73/23/EEC. A Declaration of Conformity may be obtained from <http://www2.symbol.com/doc>